



# VORTEX FLUID SYSTEMS INC.

[vortexfluidsystems.com](http://vortexfluidsystems.com)

## ORBITAL® 3000 DUAL

### DESCRIPTION

The ORBITAL® 3000 Dual has two Orbital® 3000 baskets mounted on a single base. The Orbital® 3000 Dual has a high performance and low maintenance design which incorporates longevity features such as seal welding and multiple layers of corrosion protection. The Orbital® 3000 Dual is considered by many of our customers as one of the best investments on the drilling rig. Couple this with a patent pending screen seal that is as easy to change as a set of screens and it is no wonder the Orbital® 3000 has gained an unparalleled reputation with both rig owners and tool pushers as the best shaker in the oilfield.

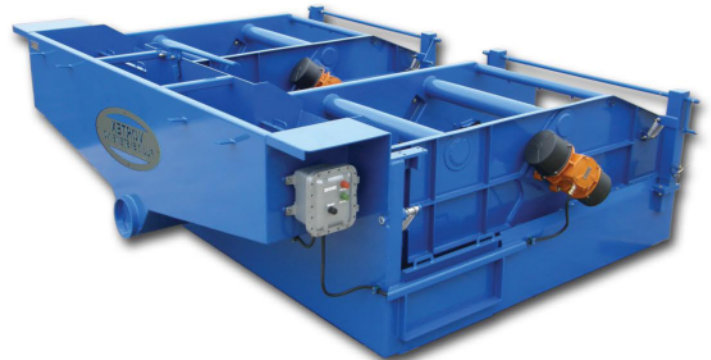
### PERFORMANCE

The screen area of the Orbital® 3000 Dual is 60 ft<sup>2</sup> with an acceleration of 6.9 g's standard and 7.5 g's optional. The combination of screen surface area, high g's, and screen motion make the Orbital® 3000 one of the best performing machines in the industry. The Orbital® 3000 Dual shaker uses progressive elliptical motion for extended screen life and excellent conveyance.

### FEATURES

Orbital® shakers have many beneficial features.

- ☑ **ACCELERATION:** 6.9 g's (standard) to 7.5 g's (optional)
- ☑ **SCREEN AREA:** 60 ft<sup>2</sup> of screening area
- ☑ **MOTION:** elliptical motion
- ☑ **SCREEN LIFE:** ORBITAL® shakers have exceptional screen life
- ☑ **SEAL WELDED:** fully seal welded baskets.
- ☑ **LOW MAINTENANCE:** ultra low maintenance design
- ☑ **LOW NOISE:** 70 db standing 3 ft from discharge
- ☑ **ABRASION PROTECTION:** two layers of powder coat
- ☑ **SCREEN SEALS:** patent pending screen seals are as easy to change as a set of screens
- ☑ **VIBRATORS:** vibrators are one of the most overbuilt electrically and mechanically in the industry
- ☑ **MANUFACTURING:** Made in USA



### DRILLING FLUIDS MANAGEMENT

The VFSI Orbital® 3000 Dual shaker is conveniently arranged to simplify drilling fluids/cement bypass management.

#### NORMAL OPERATION

In normal drilling operation the door through the floor pan between the Orbital® 3000 baskets returns flow to the sand trap.

#### CEMENTING OPERATION

Cementing is diverted to bypass the Orbital® 3000 baskets by simply installing the floor pan and two inner shaker doors, removing the two cement bypass doors, and opening the bypass gate discharges cement to the reserve pit.



**VORTEX FLUID SYSTEMS INC.**  
Serving our customers worldwide...

[www.vortexfluidsystems.com](http://www.vortexfluidsystems.com)  
office: 833.867.8391 • fax: 918.492.1688



# VORTEX FLUID SYSTEMS INC.

[vortexfluidsystems.com](http://vortexfluidsystems.com)

## SPECIFICATIONS AND DIMENSIONS

### ORBITAL® 3000 DUAL

**NAME:** Orbital® 3000 Dual

**SCREEN AREA:** 60 ft<sup>2</sup> [5.6 m<sup>2</sup>]

**"G" FORCE:** 6.9 g's (standard), 7.5 g's (optional)

**MOTION:** Progressive Elliptical

**DIMENSIONS (LxWxH):** 129-7/8x172-7/8x50-1/8in (330x439x127cm)

**BASE DIMENSIONS (LxW):** 105-7/8x156-5/8in (269x398cm)

**WEIGHT:** 9500lb [4318kg]

**WEIR HEIGHT:** 26.5in [67.3cm] (standard) or 24 in [61cm] (optional)

**ADJUSTMENT ANGLE:** 0 to 8 degrees

**ANGLE CHANGE TYPE:** hand crank (standard) or center wheel (optional)

**SCREEN TYPE:** pretension

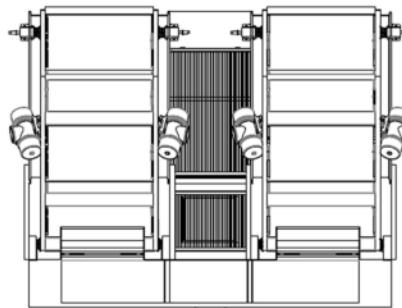
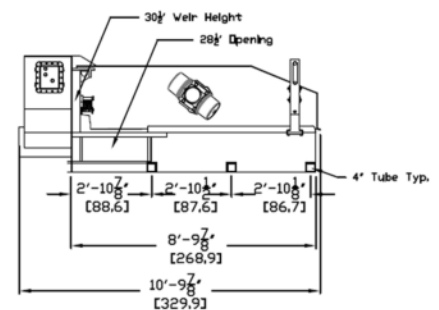
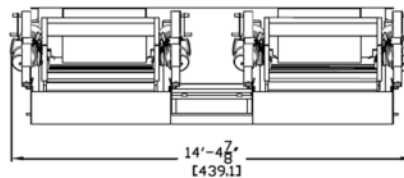
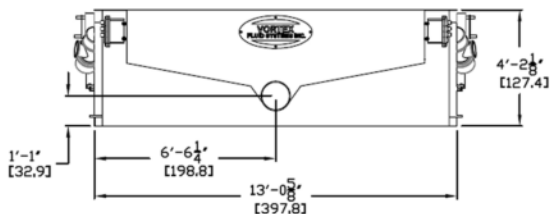
**SCREEN NUMBER:** 8 screens

**SCREEN SIZE:** 46.25 x 24 in [117 x 61 in]

**MOTORS:** Italtvebras, 1800 rpm, 50 or 60 hz

**MOTOR RATING:** UL Class 1, Div 1, ATEX/IECEEx (opt), explosion proof

**ELECTRICAL BOX RATING:** UL Class 1, Div 1, ATEX/IECEEx (opt), explosion proof



**VORTEX FLUID SYSTEMS INC.**

Serving our customers worldwide...

[www.vortexfluidsystems.com](http://www.vortexfluidsystems.com)

office: 833.867.8391 • fax: 918.492.1688